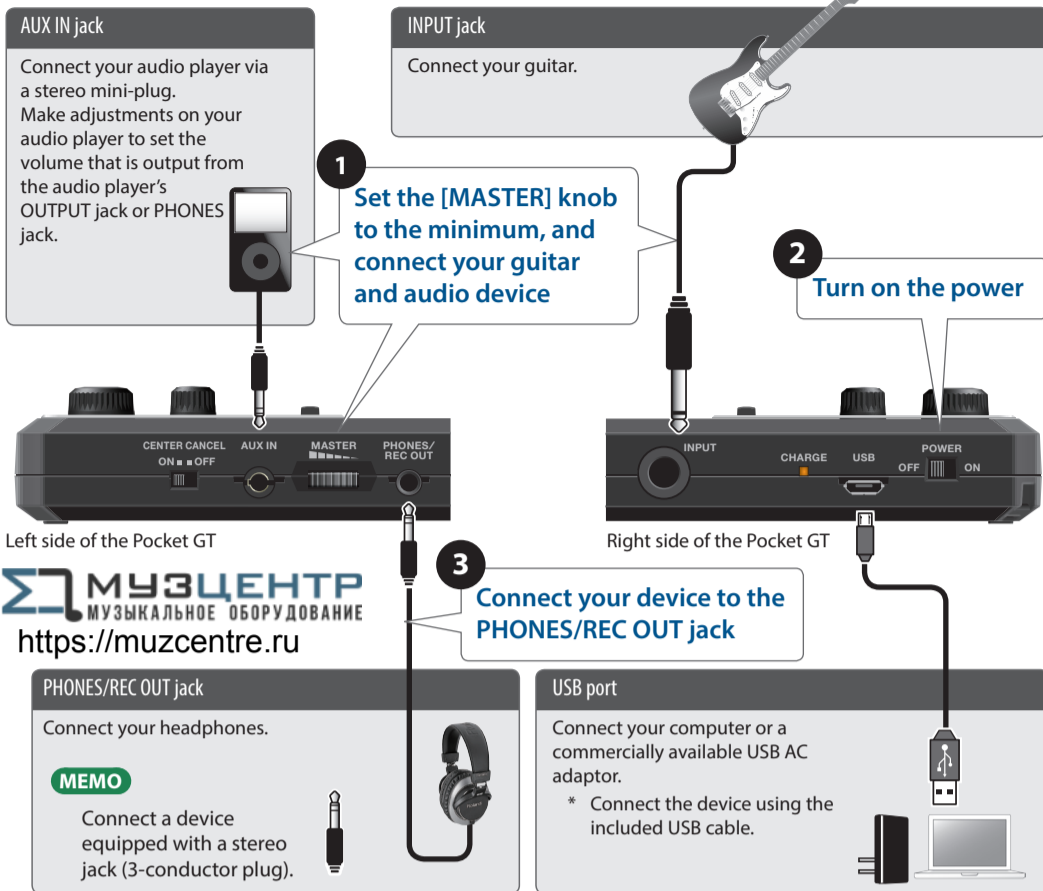


English  
**BOSS Pocket GT**  
**Owner's Manual**

Before using this unit, carefully read "USING THE UNIT SAFELY" and "IMPORTANT NOTES" (the leaflet "Read Me First"). After reading, keep the document(s) where it will be available for immediate reference.

To prevent malfunction and equipment failure, always turn down the volume, and turn off all the units before making any connections.



Left side of the Pocket GT

МУЗЦЕНТР  
 МУЗЫКАЛЬНОЕ ОБОРУДОВАНИЕ  
<https://muzcentre.ru>



- 1 [CENTER CANCEL] switch**  
When you turn this ON, the sound from the device connected to the AUX IN jack, the device wirelessly connected via Bluetooth, or the device connected to the USB port is made suitable for karaoke use.  
\* Depending on the sound, the instruments or vocals that are not in the center might not be canceled completely.
- 2 AUX IN jack**  
Connect your audio player, etc.
- 3 [MASTER] dial**  
Adjusts the volume of the PHONES/REC OUT jack.
- 4 PHONES/REC OUT jack**  
Connect your headphones, earphones, or recording device.  
\* Connect a device equipped with a stereo jack (3-conductor plug).
- 5 Display**  
Shows the user memory number or parameter value, etc. The dot in the lower right of the display indicates the Bluetooth connection status.  

Dot indication	Explanation
Lit	Connected
Slow blinking	Reconnecting
Rapid blinking	Pairing
Unlit (*)	Not connected

- 13 [◀◀] button, [▶▶] button, [▶] button**  
These buttons can remotely control a Bluetooth-connected device.
- 14 Strap holder**  
A commercially available strap can be passed through this holder.
- 15 [POWER] switch**  
Turns the power of this unit on/off.  
\* You can recharge the unit regardless of whether the [POWER] switch is OFF or ON. (You can also use the unit while it is being charged.)
- 16 USB port**  
Connect a computer or a commercially available USB AC adaptor here to supply power to this unit (charge the unit). If this is connected to a computer, audio data can be transferred.  
\* To charge the unit, use the USB port of a computer or a commercially available USB power supply adaptor (5 V, 500 mA or higher).  
\* Do not use a micro USB cable that is designed only for charging a device. Charge-only cables cannot transmit data.  
\* This product is equipped with a lithium-ion battery. Even if you do not use this product for an extended period of time, you should charge it once every three months to prevent the internal lithium-ion battery from degrading. Ambient temperature range during charging: 5–35°C (41–95°F)  
However, in order to take full advantage of the rechargeable lithium-ion battery's performance, we recommend that you charge it in a temperature range of 10–30°C (50–86°F).  
\* You must install the USB driver before connecting to a computer. Install this special driver before making a USB connection. <http://www.boss.info/support/>  
For further details, refer to the Readme.htm file that comes with the download.

- 17 CHARGE indicator**  
Indicates the state of power supplied to this unit.
- | Indicator color           | Explanation   |
|---------------------------|---|
| Lit orange                | Charging.   |
| Lit green                 | Power is being supplied to the USB port.<br>Charging is completed.  |
| Blinking orange and green | A charging error occurred. Contact your dealer or a Roland customer service center.   |
| Lit red                   | Power is not being supplied to the USB port.<br>The battery is nearly exhausted. Please recharge.<br>* This unit will turn off within 30 minutes. |
| Unlit                     |   |

- 18 INPUT jack**  
Connect your guitar.

## Performing

### Selecting a User Memory

Effect settings are stored as "user memories"; you can recall a user memory at any time.

- 1. Turn the [VALUE] knob.**  
User memories are recalled. The display shows the current user memory number (01–99).

## Using the Knobs to Adjust the Sound

You can use the three knobs to adjust the character of the sound.

- 1. Press the [SELECT] button.**  
Make the upper indicator light. Now you can use the knobs to adjust the preamp gain, preamp volume, and reverb.
- 2. Turn each knob.**  
Adjust the character of the sound. The display indicates the value of the knob (00–99).
- 3. Press the [SELECT] button.**  
Make the lower indicator light. Now you can use the knobs to adjust the amount of drive, modulation, and delay.
- 4. Turn each knob.**  
Select the type of effect.

[OD/DS] knob	[MOD] knob	[DELAY] knob	Explanation
			The sound of the selected user memory.
			The effect is off.
			Indicates the value of the knob.

## Saving a Sound in User Memory

Here's how to save an edited sound in user memory.

- 1. Long-press the [VALUE] knob.**  
The display blinks.
- 2. Turn the [VALUE] knob.**  
Select the user memory number (01–99) in which you want to save the sound.  
\* If you decide to cancel the operation, press the [TUNER/EXIT] button.
- 3. Long-press the [VALUE] knob.**  
The sound is saved in the user memory that you selected. You can recall an edited sound at any time.

## Using the Tuner

Here's how to detect the pitch of your guitar (instrument).

## Tuning Your Guitar

- 1. Press the [TUNER/EXIT] button.**
- 2. Play a string of the guitar (single note).**  
The display shows the key (note name) at the left, and the pitch discrepancy at the right.  
The example shown below is for when you're tuning the "A" note.

	The guitar's pitch is low	When the pitch is correct	The guitar's pitch is high
	← ← ← ←	→ → → →	→ → → →
Display	A <sub>1</sub> A <sub>2</sub> A <sub>3</sub> A <sub>4</sub>	A	A <sub>1</sub> A <sub>2</sub> A <sub>3</sub> A <sub>4</sub>

- \* The dot shown at the lower right of the key (note name) indicates "#." For example, the indication "A#" signifies the "A#" note.  
\* To exit the tuner, press the [TUNER/EXIT] button once again.

## Listening to Audio from a Mobile Device Through This Unit (Bluetooth® Audio)

By wirelessly connecting your mobile device with this unit via Bluetooth, you can use this unit to hear audio that's played back from your mobile device. You can also remotely control your mobile device.

## About the BOSS TONE STUDIO for Pocket GT App

The "BOSS TONE STUDIO for Pocket GT" app (subsequently called "BOSS TONE STUDIO") lets you do the following.

- Edit sounds
- Edit the sound library
- Use practice functions, etc.

For details about BOSS TONE STUDIO, refer to the BOSS website.

<https://www.boss.info/global/>

## Pair the Mobile Device with This Unit

Here's how to register your mobile playback device with this unit.

- 1. Long-press the [Bluetooth] button (for 3 seconds or longer).**  
The dot in the lower right of the display blinks rapidly.
- 2. Turn on the Bluetooth switch of your mobile device (e.g., smartphone).**
- 3. Tap the "POCKET-GT Audio" indication that appears in the Bluetooth screen of your mobile device.**  
Your mobile device is paired with this unit. At this time, the dot in the lower right of the display changes (from blinking) to being lit.

\* You will have two minutes and 30 seconds to make pairing settings. After that, the dot changes to slow blinking or to an unlit state. If you want to reattempt pairing settings, repeat the procedure from step 1.

## Operating the Mobile Device from This Unit (Remote Control)

Here's how to control an app (player) on your mobile device from this unit.

- 1. In your paired mobile device, start the audio player, etc.**
- 2. Operate the following buttons on this unit.**

Operation	Explanation
Long-press [◀◀]	Rewind
Press [◀◀] twice rapidly	Move approximately -10 seconds (*)
Press [◀◀] and [▶▶] simultaneously	Play back from the beginning of the previous song or current song
Press [▶▶]	Play back / Pause
Press [▶▶] and [▶▶] simultaneously	Play back the next song
Long-press [▶▶]	Fast-forward
Press [▶▶] twice rapidly	Move approximately +10 seconds (*)

\* Depending on the mobile device app, this might not work correctly.

\* (\*) The rewind/fast-forward movement time can be specified in the BOSS TONE STUDIO app.

\* For an explanation of the Bluetooth function, refer to "Using BOSS TONE STUDIO" (PDF). To download this, refer to "About the PDF manuals."

## Troubleshooting

Problem	Items to check/Action
The CHARGE indicator blinks green and orange	A charging error occurred. Could the ambient temperature be above 35°C (95°F)? • Charging might stop for a while in order to protect the rechargeable lithium-ion battery. Use the unit in the recommended ambient temperature range of 10–30°C (50–86°F). • If the indicator continues blinking green and orange even though you are charging in the recommended temperature range, contact your dealer or a Roland customer service center.

## Returning This Unit to the Factory Settings (Factory Reset)

- 1. While holding down the [SELECT] button and the [▶▶] button, turn on the power.**  
At this time, hold down the buttons until the display indicates "FR".  
When the display indicates "0 !." (the dot in the lower right blinks), the unit is returned to the factory settings.

## Main Specifications

Battery charging time	Approximately 3 hours (when power is off)
Expected battery life under continuous use	Approximately 4 hours
Power Supply	Supplied from lithium-ion battery or USB port
Current Draw	When charging: 500 mA
Weight	160 g, 6 oz
Accessories	Owner's Manual, Leaflet "USING THE UNIT SAFELY," Micro USB cable

\* This document explains the specifications of the product at the time that the document was issued. For the latest information, refer to the Roland website.

## About the PDF manuals

### Using BOSS TONE STUDIO

For details on connecting this unit wirelessly via Bluetooth, refer to the operating instructions in BOSS TONE STUDIO.

### Parameter Guide

This explains all of the parameters.

- 1. From your smartphone or computer, access the following URL.**  
[http://roland.cm/pocket-gt\\_om](http://roland.cm/pocket-gt_om)



- 2. Download the PDF manual that you need.**